



Specification For Approval

Customer: _____

Description: **LED PIXEL**

Part number: **RL520-L12WA15-276P**

Date: **2007-10-4**

Approved By:

--

Prepared By:

Approval	Check	Design	Sales



PartNumber: RL520-L12WA15-276P

Features

- 1.Low power consumption .
- 2.High efficiency.
- 3.(D) 31*(L) 1200 WEIGHT:1KG IP:IP54
- 4.I.C compatible/ low current requirement.

★Package Dimensions

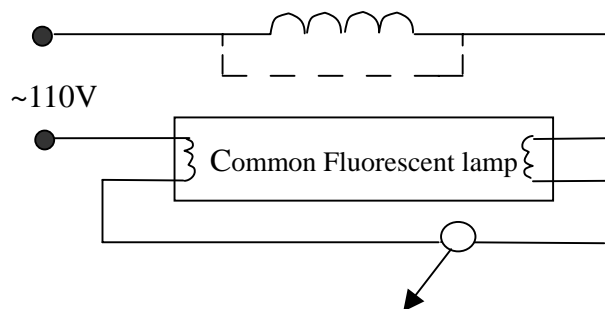
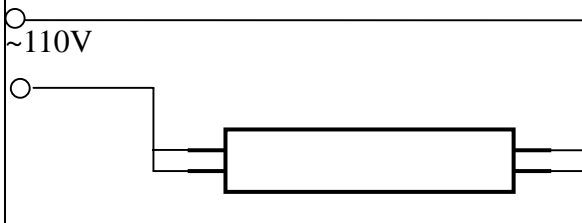
Unit: mm



LED Fluorescent lamp instruction guide line

multi-cell LED Semicnductor Fruorescent circuit

Replacing the common Fluorescent lamp as the Following circuit and instruction: (Ballast)



★ Selection Guide

Part Number	Lens color	Chip		
		Material	Emitted color	λ p(nm)
RL520-L12WA15 -276P	Water Clear	InGaN	white	\

EXCEED PERSEVERANCE ELECTRONICS IND CO., LTD

www.exceedledcn.com



Light-emitting diode



TECHNICAL SPECIFICATION

Part Number: RL520-L12WA15-276P

Absolute Maximum Ratings:

PARAMETER	RED	UNIT
Power Dissipation Per Don	15000	mw
Continuous Forward Current Per Don(DC)	20	mA
Reverse Voltage Per Don(DC)	110	V
White LED	330	PCS
Opertion Temperature Range	-20℃ TO +100℃	
Storage Temperature Range	-40℃ TO +100℃	

Single LED:

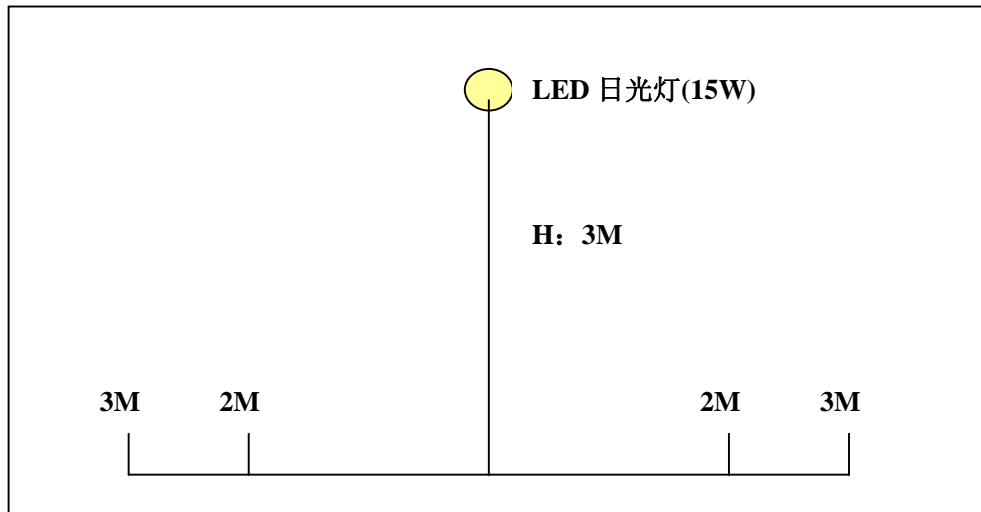
Parameter	Symbol	MIN.	TYP.	MAX.	UNIT	TEST CONDITION
Forward Voltage	VF		110		V	If=20mA
Peak Wavelength	λp	\	\	\	nm	
Reverse Current	IR			40	μ A	VR=5V
Power dissipation	Pd		15000		mW	
Luminous Intensity	IV	\	\	\	LUX	If=20mA
Peak Forward Current	If(Peak)			160	mA	
Recommend Forward Current	If(Rec)		20		mA	

EXCEED PERSEVERANCE ELECTRONICS IND CO., LTD

www.exceedledcn.com



sketch map of place and brightness



Power dissipation	Ture dissipation	Left:3m	Left:2m	Center:3m	Right:2m	Right:3m
15W	16.5	21 lux	34.6 lux	51.2 lux	34.6 lux	21.5 lux
40W	68.5	17.6 lux	24 lux	33.3 lux	24.2 lux	18.1 lux
40W	68.7	20 lux	29.2 lux	41.9 lux	29.2 lux	21 lux